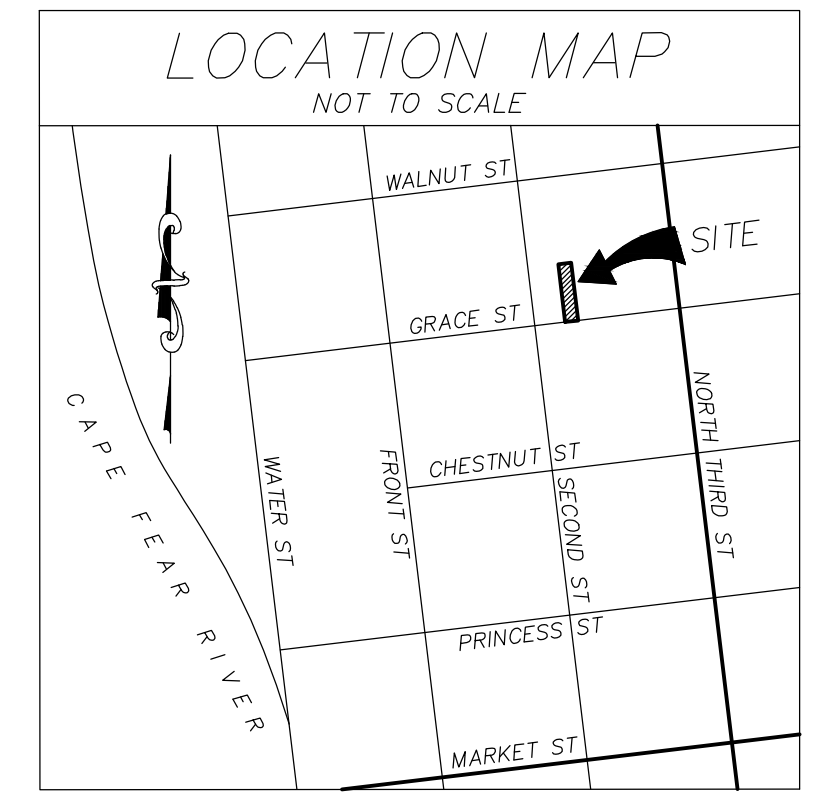


- NOTES:**
1. THE CONSTRUCTION SITE IS NOT LOCATED IN A FEMA FLOOD HAZARDOUS ZONE. FIRM # 3701713117K, APRIL 3, 2006.
 2. THERE ARE NO WETLANDS ON THE SITE.
 3. THERE ARE NO EXISTING TREES ON THE SITE.
 4. TRAFFIC CONTROL DEVICES (INCLUDING SIGNS AND PAVEMENT MARKINGS) IN AREAS OPEN TO PUBLIC TRAFFIC ARE TO MEET MUTCD (MANUAL ON UNIFORM TRAFFIC CONTROL DEVICES) STANDARDS.
 5. IF THE CONTRACTOR DESIRES WATER FOR CONSTRUCTION, HE SHALL APPLY IN ADVANCE FOR THIS SERVICE FROM CAPE FEAR PUBLIC UTILITY AUTHORITY (CFPUA) AND MUST PROVIDE A REDUCED PRESSURE ZONE (RPZ) BACKFLOW PREVENTION DEVICE ON THE DEVELOPER'S SIDE OF THE METER BOX. ANY BACKFLOW PREVENTION DEVICES REQUIRED WILL NEED TO BE ON THE LIST OF DEVICES APPROVED BY USFCOCHR OR ASSE.
 6. ANY IRRIGATION SYSTEM SUPPLY BY CFPUA WATER SHALL COMPLY WITH THE CFPUA CROSS CONNECTION CONTROL REGULATIONS.
 7. CONTACT THE NORTH CAROLINA ONE CALL CENTER PRIOR TO DOING ANY DIGGING.
 8. THE BELLSOUTH CONTACT IS STEVE DAYVAULT. HE IS THE BUILDING INDUSTRY CONSULTANT (910) 392-8712. PLEASE CONTACT HIM PRIOR TO STARTING THE PROJECT IN ORDER TO FACILITATE GOOD COMMUNICATION AND MAXIMUM FLEXIBILITY.
 9. ALL PLANTED AND RETAINED LIVING MATERIAL REQUIRED TO MEET THE PROVISIONS OF THE CITY OF WILMINGTON LAND DEVELOPMENT CODE, SHALL BE PERPETUALLY PROTECTED AND MAINTAINED TO PROFESSIONAL ACCEPTED STANDARDS BY JOINT AND SEVERAL RESPONSIBILITY OF THE OWNER, TENANT AND RESPECTIVE AGENTS OF THE PROPERTY ON WHICH THE MATERIAL IS LOCATED.
 10. ANY PLANT MATERIAL THAT WAS PREVIOUSLY INSTALLED ON THE SITE TO MEET THE PROVISIONS OF THE CITY OF WILMINGTON LAND DEVELOPMENT CODE THAT HAS NOT BEEN MAINTAINED MUST BE REPLACED.
 11. AS PART OF THE FINAL ZONING INSPECTION FOR THIS PROJECT, A SURVEY OF THE SITE LANDSCAPING WILL BE CONDUCTED. PLANT MATERIAL THAT HAS NOT BEEN MAINTAINED MUST BE REPLACED BEFORE A FINAL ZONING APPROVAL IS ISSUED.
 12. ALL PARKING STALL MARKINGS AND LANE ARROWS WITHIN THE PARKING AREAS SHALL BE WHITE.
 13. ALL TRAFFIC CONTROL SIGNS AND MARKINGS OFF THE RIGHT-OF-WAY ARE TO BE MAINTAINED BY THE PROPERTY OWNER IN ACCORDANCE WITH MUTCD STANDARDS.
 14. A RAIN/FREEZE SENSOR SHALL BE INSTALLED AS PART OF ANY IRRIGATION SYSTEM USED ON THE SITE.
 15. CONTACT TRAFFIC ENGINEERING AT 910-341-7888 48 HOURS PRIOR TO ANY EXCAVATION IN THE RIGHT-OF-WAY TO ENSURE THAT ALL TRAFFIC SIGNAL FACILITIES AND EQUIPMENT ARE PROPERLY LOCATED.
 16. A UTILITY CUT PERMIT IS REQUIRED FOR EACH OPEN CUT OF A CITY STREET. NOTE THIS ON THE PLAN AND CONTACT 341-5888 FOR MORE DETAILS. IN CERTAIN CASES AN ENTIRE RESURFACING OF THE AREA BEING OPEN CUT MAY BE REQUIRED.
 17. TACTILE WARNING MATS WILL BE INSTALLED ON ALL WHEELCHAIR RAMPS.
 18. CONTACT KAREN DIXON AT 910-341-7888 TO DISCUSS STREET LIGHTING OPTIONS.
 19. ANY BACKFLOW PREVENTION DEVICES REQUIRED BY THE CFPUA WILL NEED TO BE ON THE LIST OF APPROVED DEVICES BY USFCOCHR OR ASSE.
 20. CONTRACTOR TO FIELD VERIFY EXISTING WATER AND SEWER SERVICE LOCATIONS, SIZES AND MATERIALS PRIOR TO CONSTRUCTION. ENGINEER TO BE NOTIFIED OF ANY CONFLICTS.
 21. CONTRACTOR SHALL MAINTAIN ALL-WEATHER ACCESS FOR EMERGENCY VEHICLES AT ALL TIMES DURING CONSTRUCTION.
 22. ALL PAVEMENT MARKINGS IN PUBLIC RIGHTS-OF-WAY AND FOR DRIVEWAYS ARE TO BE THERMOPLASTIC AND MEET CITY AND/OR NCDOT STANDARDS.
 23. TRAFFIC ENGINEERING MUST APPROVE OF PAVEMENT MARKING PRIOR TO ACTUAL STRIPING.
 24. ANY BROKEN OR MISSING SIDEWALK PANELS, DRIVEWAY PANELS AND CURBING WILL BE REPLACED.
 25. PROJECT SHALL COMPLY WITH CFPUA CROSS CONNECTION REQUIREMENTS. WATER METER(S) CANNOT BE RELEASED UNTIL ALL REQUIREMENTS ARE MET AND THE STATE HAS GIVEN THEIR FINAL APPROVAL. CALL 910-343-3910 FOR INFORMATION.
 26. EXISTING SERVICES MUST BE ABANDONED PER CFPUA SPECIFICATIONS.
 27. ALL NEW UTILITIES SHALL BE INSTALLED UNDERGROUND, EXCEPT WHERE SUCH PLACEMENT IS PROHIBITED OR DEEMED IMPRACTICAL BY THE UTILITY PROVIDER. UNDERGROUND TERMINAL FACILITIES FOR STREET LIGHTING ALONG ALL PUBLIC STREETS ABUTTING THE SUBJECT SITE SHALL BE INSTALLED BY THE DEVELOPER.
 28. IMMEDIATELY NOTIFY CITY OF WILMINGTON TRAFFIC ENGINEERING AT 910-341-7888 IF ANY TRAFFIC SIGNAL FACILITIES OR CITY-OWNED STREETLIGHT FACILITIES ARE DAMAGED.
 29. DAMAGED FACILITIES SHALL BE REPLACED BY AN APPROVED CONTRACTOR, ACCORDING TO STANDARD NCDOT REPLACEMENT SCHEDULES AND CURRENT NCDOT DESIGN STANDARDS.
 30. ALL REPAIR/REPLACEMENT OF TRAFFIC SIGNAL INFRASTRUCTURE SHALL BE COORDINATED WITH THE CITY OF WILMINGTON TRAFFIC ENGINEERING DIVISION.

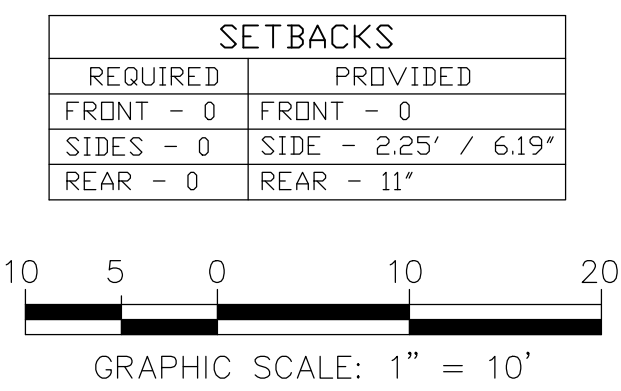


1-800-632-4949

CITY OF WILMINGTON
NORTH CAROLINA
Public Services • Engineering Division
APPROVED DRAINAGE PLAN
Date: _____ Permit # _____
Signed: _____

SITE DATA TABLE	
PIN	R04817-001-002-000
ADDRESS	205 GRACE ST WILMINGTON, NC 28401
OWNER	3RD STREET PROPERTIES, LLC 1201 GLEN MEADE RD. WILMINGTON, NC 28401 1201 GLAN MEADE RD.
ZONING	CENTRAL BUSINESS DISTRICT
ACREAGE	0.10 (4223 SQ FT)
EX. BLDG & SIDEWALKS & WALLS	32 SF WALL
EX. PARKING & DRIVES	0
TOTAL EXISTING IMPERVIOUS	0
PROPOSED IMPERVIOUS	3,616 SF (86%)
PROPOSED LANDSCAPING	607 SF
DISTURBED AREA	4,223 SF = 0.10 AC
CAMA LAND USE DESIGNATION	DEVELOPED
USDA SOIL CLASSIFICATION - ENTIRE SITE	KUREB-URBAN LAND
SETBACK REQUIREMENTS	0 - ALL SIDES
FEMA FLOOD ZONE X	FEMA MAP PANEL 3701713117K
CAPE FEAR RIVER BASIN	NORTHEAST CAPE FEAR RIVER, CLASS SCJ5w

Approved Construction Plan	
Name	Date
Planning	
Traffic	
Fire	



GRACE STREET PARKING
WILMINGTON NEW HANOVER COUNTY NORTH CAROLINA

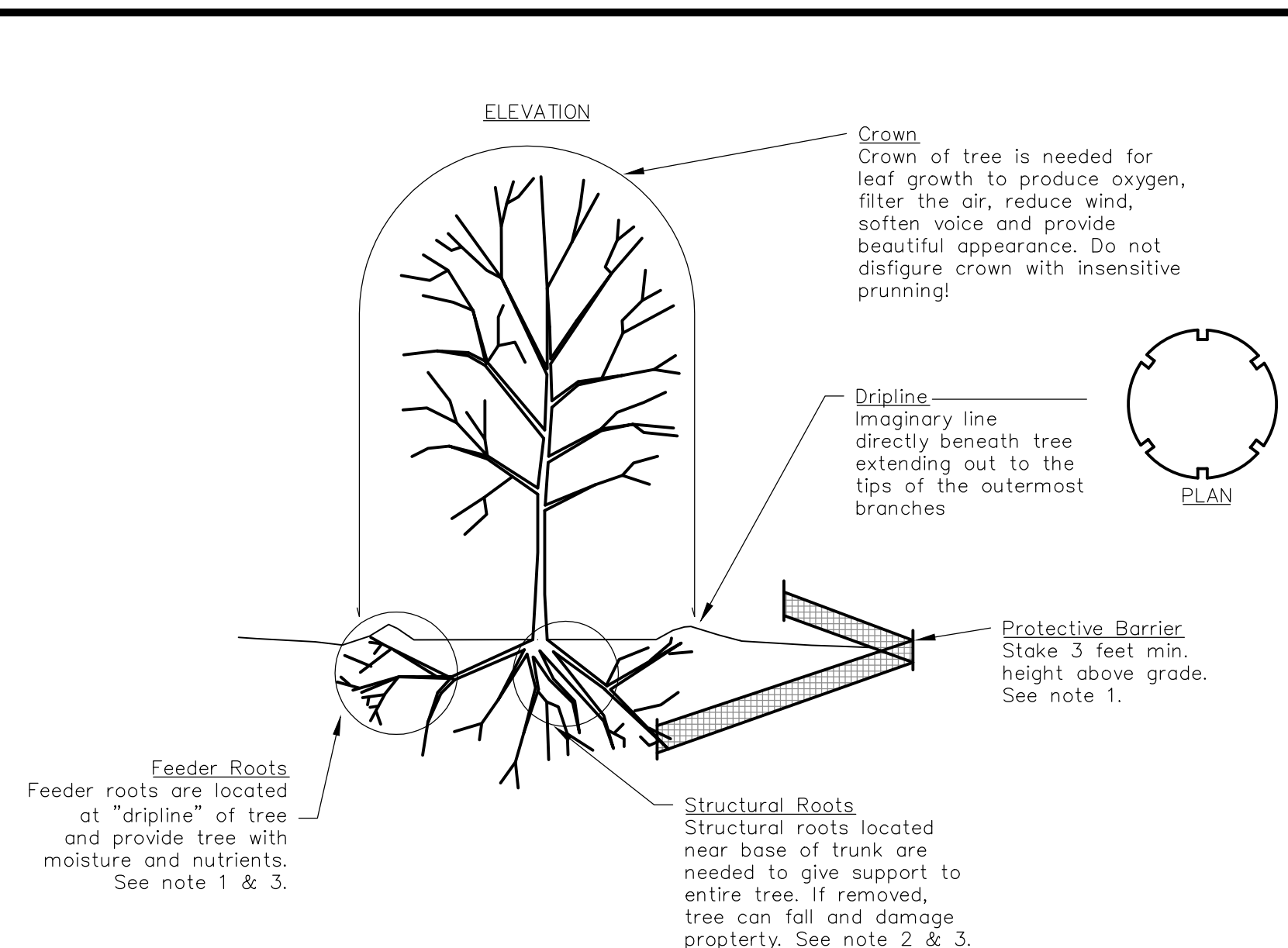
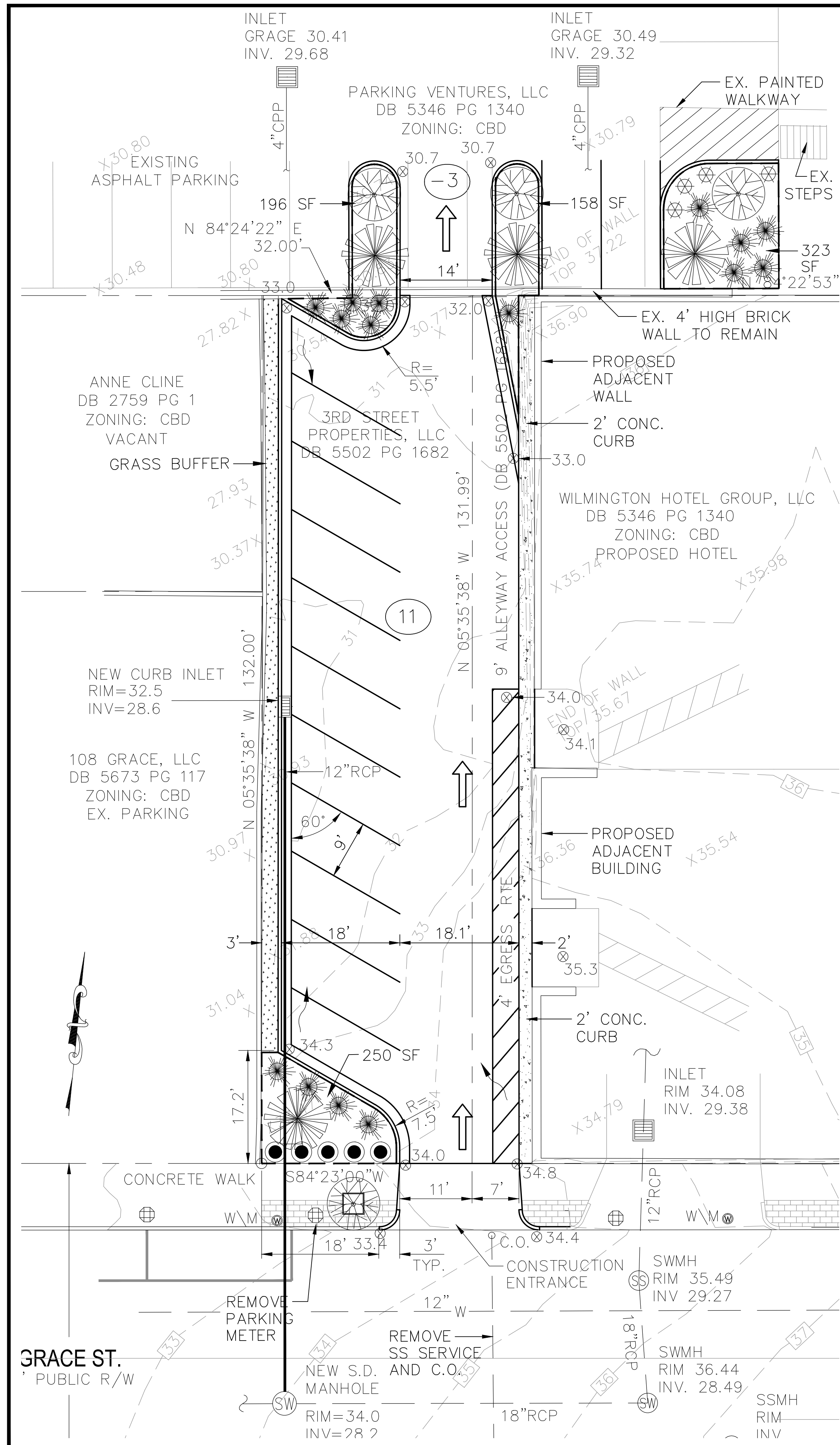
SITE AND LANDSCAPE PLAN AND DETAILS

2640N_2014

RIGHT ANGLE ENGINEERING, P.C.
312 PRINCESS STREET
WILMINGTON, NC 28401
(910) 251-8544 FAX (910) 251-2208

DATE: 1/15/2014
Scale: 1" = 10'
Drawn: NNC
Checked: WSL
Project No: MP0114
Sheet No: C2

REV. NO.	DESCRIPTION	DATE

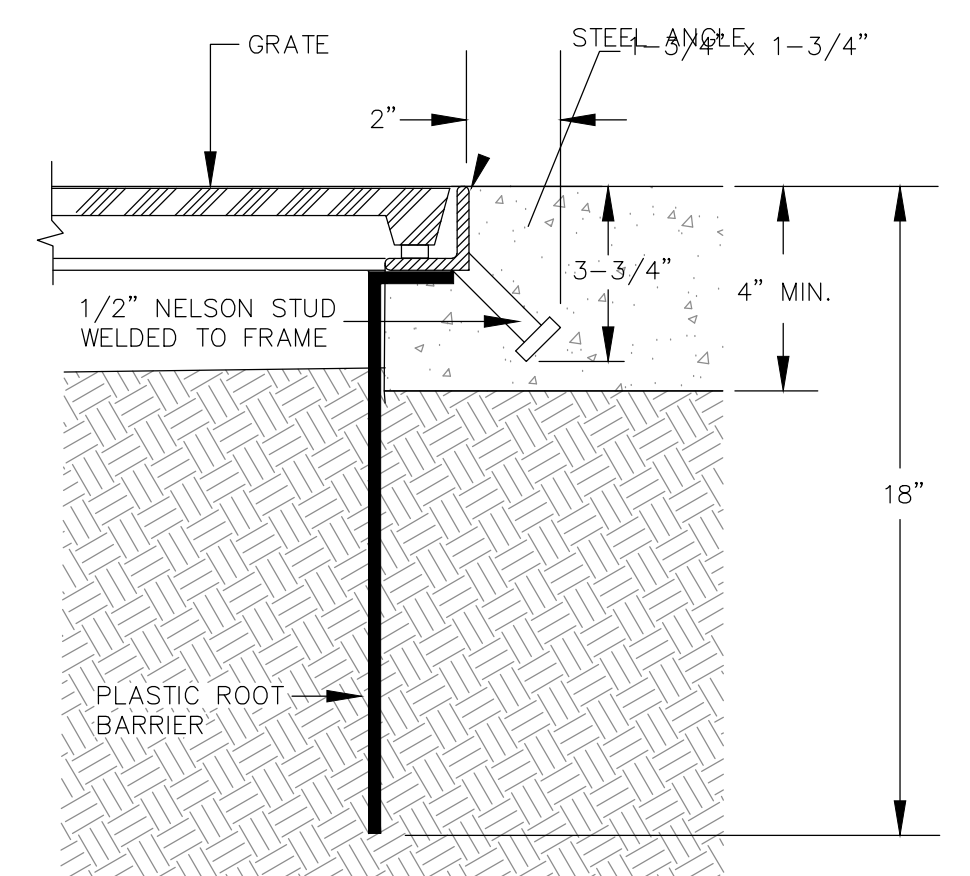


TREE PROTECTION DURING CONSTRUCTION

1. CLEARLY MARK THE TREE TO BE SAVED PRIOR TO CONSTRUCTION AND ERECT A PROTECTIVE BARRIER AT THE DRIFLINE. DO NOT COMPACT SOILS BENEATH TREES. NO VEHICLE SHALL BE ALLOWED TO PARK UNDER TREES. NO HEAVY MATERIALS SHALL BE STORED BENEATH TREES. RESULTS OF COMPACTION CAUSE WATER AND AIR NOT TO REACH THE ROOTS AND THE TREE WILL DIE. THESE "FEEDING ROOTS" OCCUR WELL AWAY FROM THE BASE OF THE TREE TO THE EDGE OF THE OVERHEAD BRANCH CANOPY. DAMAGING THE BARK WITH LAWNMOWERS, CONSTRUCTION EQUIPMENT, OR ANYTHING ELSE IS PROHIBITED. THE PROTECTIVE BARRIER SHOULD PREVENT DAMAGE FROM OCCURRING DURING CONSTRUCTION.
2. NO CUTTING OF LARGE STRUCTURAL ROOTS LOCATED NEAR THE BASE OF THE TRUNK. REMOVAL OF THESE ROOTS ALONG ONE SIDE IS OFTEN DONE BECAUSE OF A WALK, PAVING OR BUILDING WHICH IS BEING CONSTRUCTED THESE ARE ESSENTIAL IN SUPPORTING THE TREE AND HOLDING IT UPRIGHT IN HIGH WINDS.
3. AVOID CUT AND FILL WITHIN DIAMETER OF TREE CROWN DURING EXCAVATION.

- NOTES:**
1. THE CONSTRUCTION SITE IS NOT LOCATED IN A FEMA FLOOD HAZARDOUS ZONE. FIRM # 3701713117K, APRIL 3, 2006.
 2. THERE ARE NO WETLANDS ON THE SITE.
 3. THERE ARE NO EXISTING TREES ON THE SITE.
 4. TRAFFIC CONTROL DEVICES (INCLUDING SIGNS AND PAVEMENT MARKINGS) IN AREAS OPEN TO PUBLIC TRAFFIC ARE TO MEET MUTCD (MANUAL ON UNIFORM TRAFFIC CONTROL DEVICES) STANDARDS.
 5. IF THE CONTRACTOR DESIRES WATER FOR CONSTRUCTION, HE SHALL APPLY IN ADVANCE FOR THIS SERVICE FROM CAPE FEAR PUBLIC UTILITY AUTHORITY (CFPUA) AND MUST PROVIDE A REDUCED PRESSURE ZONE (RPZ) BACKFLOW PREVENTION DEVICE ON THE DEVELOPER'S SIDE OF THE METER BOX. ANY BACKFLOW PREVENTION DEVICES REQUIRED WILL NEED TO BE ON THE LIST OF DEVICES APPROVED BY USCFCCHOR OR ASSE.
 6. ANY IRRIGATION SYSTEM SUPPLY BY CFPUA WATER SHALL COMPLY WITH THE CFPUA CROSS CONNECTION CONTROL REGULATIONS.
 7. CONTACT THE NORTH CAROLINA ONE CALL CENTER PRIOR TO DOING ANY DIGGING.
 8. THE BELLSOUTH CONTACT IS STEVE DAYVAULT. HE IS THE BUILDING INDUSTRY CONSULTANT (910) 392-8712. PLEASE CONTACT HIM PRIOR TO STARTING THE PROJECT IN ORDER TO FACILITATE GOOD COMMUNICATION AND MAXIMUM FLEXIBILITY.
 9. ALL PLANTED AND RETAINED LIVING MATERIAL REQUIRED TO MEET THE PROVISIONS OF THE CITY OF WILMINGTON LAND DEVELOPMENT CODE, SHALL BE PERPETUALLY PROTECTED AND MAINTAINED TO PROFESSIONAL ACCEPTED STANDARDS BY JOINT AND SEVERAL RESPONSIBILITY OF THE OWNER, TENANT AND RESPECTIVE AGENTS OF THE PROPERTY ON WHICH THE MATERIAL IS LOCATED.
 10. ANY PLANT MATERIAL THAT WAS PREVIOUSLY INSTALLED ON THE SITE TO MEET THE PROVISIONS OF THE CITY OF WILMINGTON LAND DEVELOPMENT CODE THAT HAS NOT BEEN MAINTAINED MUST BE REPLACED.
 11. AS PART OF THE FINAL ZONING INSPECTION FOR THIS PROJECT, A SURVEY OF THE SITE LANDSCAPING WILL BE CONDUCTED. PLANT MATERIAL THAT HAS NOT BEEN MAINTAINED MUST BE REPLACED BEFORE A FINAL ZONING APPROVAL IS ISSUED.
 12. ALL PARKING STALL MARKINGS AND LANE ARROWS WITHIN THE PARKING AREAS SHALL BE WHITE.
 13. ALL TRAFFIC CONTROL SIGNS AND MARKINGS OFF THE RIGHT-OF-WAY ARE TO BE MAINTAINED BY THE PROPERTY OWNER IN ACCORDANCE WITH MUTCD STANDARDS.
 14. A RAIN/FREEZE SENSOR SHALL BE INSTALLED AS PART OF ANY IRRIGATION SYSTEM USED ON THE SITE.
 15. CONTACT TRAFFIC ENGINEERING AT 910-341-7888 48 HOURS PRIOR TO ANY EXCAVATION IN THE RIGHT-OF-WAY TO ENSURE THAT ALL TRAFFIC SIGNAL FACILITIES AND EQUIPMENT ARE PROPERLY LOCATED.
 16. A UTILITY CUT PERMIT IS REQUIRED FOR EACH OPEN CUT OF A CITY STREET. NOTE THIS ON THE PLAN AND CONTACT 341-5888 FOR MORE DETAILS. IN CERTAIN CASES AN ENTIRE RESURFACING OF THE AREA BEING OPEN CUT MAY BE REQUIRED.
 17. TACTILE WARNING MATS WILL BE INSTALLED ON ALL WHEELCHAIR RAMPS.
 18. CONTACT KAREN DIXON AT 910-341-7888 TO DISCUSS STREET LIGHTING OPTIONS.
 19. ANY BACKFLOW PREVENTION DEVICES REQUIRED BY THE CFPUA WILL NEED TO BE ON THE LIST OF APPROVED DEVICES BY USCFCCHOR OR ASSE.
 20. CONTRACTOR TO FIELD VERIFY EXISTING WATER AND SEWER SERVICE LOCATIONS, SIZES AND MATERIALS PRIOR TO CONSTRUCTION. ENGINEER TO BE NOTIFIED OF ANY CONFLICTS.
 21. CONTRACTOR SHALL MAINTAIN ALL-WEATHER ACCESS FOR EMERGENCY VEHICLES AT ALL TIMES DURING CONSTRUCTION.
 22. ALL PAVEMENT MARKINGS IN PUBLIC RIGHTS-OF-WAY AND FOR DRIVEWAYS ARE TO BE THERMOPLASTIC AND MEET CITY AND/OR NCDOT STANDARDS.
 23. TRAFFIC ENGINEERING MUST APPROVE OF PAVEMENT MARKING PRIOR TO ACTUAL STRIPING.
 24. ANY BROKEN OR MISSING SIDEWALK PANELS, DRIVEWAY PANELS AND CURBING WILL BE REPLACED.
 25. PROJECT SHALL COMPLY WITH CFPUA CROSS CONNECTION CONTROL REQUIREMENTS. WATER METER(S) CANNOT BE RELEASED UNTIL ALL REQUIREMENTS ARE MET AND THE STATE HAS GIVEN THEIR FINAL APPROVAL. CALL 910-343-3910 FOR INFORMATION.
 26. EXISTING SERVICES MUST BE ABANDONED PER CFPUA SPECIFICATIONS.
 27. ALL NEW UTILITIES SHALL BE INSTALLED UNDERGROUND, EXCEPT WHERE SUCH PLACEMENT IS PROHIBITED OR DEEMED IMPRACTICAL BY THE UTILITY PROVIDER. UNDERGROUND TERMINAL FACILITIES FOR STREET LIGHTING ALONG ALL PUBLIC STREETS ABUTTING THE SUBJECT SITE SHALL BE INSTALLED BY THE DEVELOPER.
 28. IMMEDIATELY NOTIFY CITY OF WILMINGTON TRAFFIC ENGINEERING AT 910-341-7888 IF ANY TRAFFIC SIGNAL FACILITIES OR CITY-OWNED STREETLIGHT FACILITIES ARE DAMAGED.
 29. DAMAGED FACILITIES SHALL BE REPLACED BY AN APPROVED CONTRACTOR, ACCORDING TO STANDARD NCDOT REPLACEMENT SCHEDULES AND CURRENT NCDOT DESIGN STANDARDS.
 30. ALL REPAIR/REPLACEMENT OF TRAFFIC SIGNAL INFRASTRUCTURE SHALL BE COORDINATED WITH THE CITY OF WILMINGTON TRAFFIC ENGINEERING DIVISION.

LANDSCAPE LEGEND			
SYMBOL	PLANT	SIZE/SPEC.	QUANTITY
	CREPE MYRTLE LAGERSTROEMIA INDICA 'TOWNHOUSE' UNIFORM COLOR	MIN = 2.5" CALIPER	4
	HOLLY ILEX OPACA 'TINGA'	MIN = 2.5" CALIPER	4
	3' x 3' IRON AGE TREE GRATE, "SONOMA"		1
	DWARF MOCK ORANGE PITTIOSPORUM TOBIRA 'WHEELER'S DWARF'	MIN 36" HT AT PLANTING 4' O.C.	5
	DWARF MOCK ORANGE PITTIOSPORUM TOBIRA 'CREAM DE MINT'	MIN 3 GAL. 4.5' O.C.	15
	PINK MUHLIY GRASS MUHLENBERGIA CAPILLARIS	MIN 1 GAL. 3.5' O.C. (MIN)	4
	BERMUDA 'CELEBRATION'	SOD	274 SF



TREE GRATE FRAME INSTALLATION DETAIL
NOT TO SCALE

CITY OF WILMINGTON
NORTH CAROLINA
Public Services • Engineering Division
APPROVED DRAINAGE PLAN
Date: _____ Permit # _____
Signed: _____

Approved Construction Plan

Name	Date
Planning	
Traffic	
Fire	

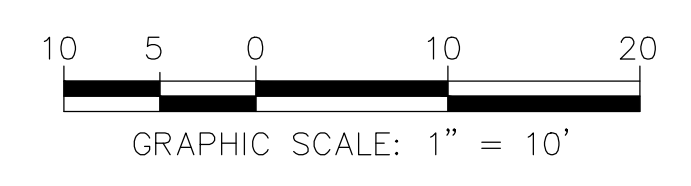
GRACE STREET PARKING
WILMINGTON NORTH CAROLINA
NEW HANOVER COUNTY

**SITE AND LANDSCAPE PLAN
OPTION 3**

2640N_2014

RIGHT ANGLE ENGINEERING, P.C.
312 PRINCESS STREET
WILMINGTON, NC 28401
(910) 251-8544 FAX (910) 251-2208

DATE: 1/15/2014
Scale: 1" = 10'
Drawn: NNC
Checked: WSL
Project No: MP0114
Sheet No: L1



REV. NO.	DESCRIPTION	DATE